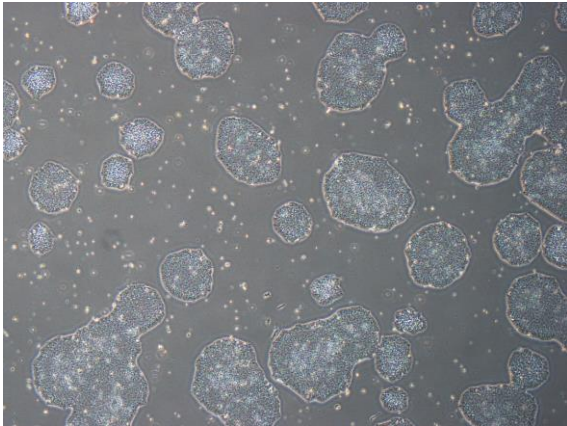
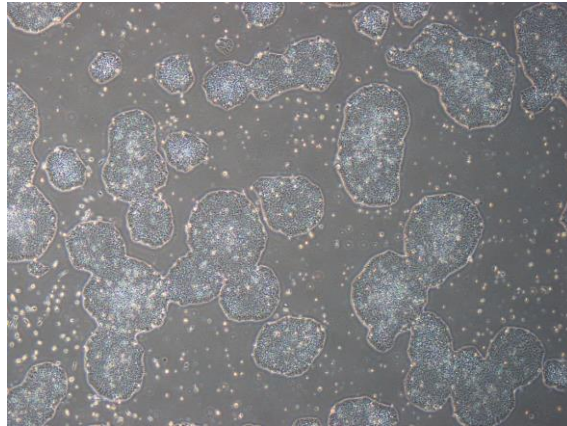


【 CiRA-j-1261 】 Morphology of iPSC colonies

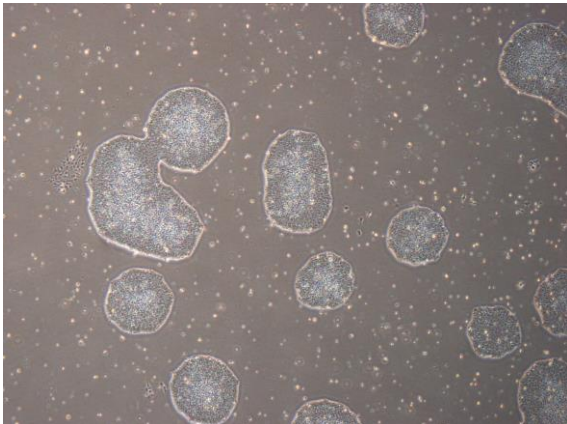
CiRA-j-1261-A: passage-3



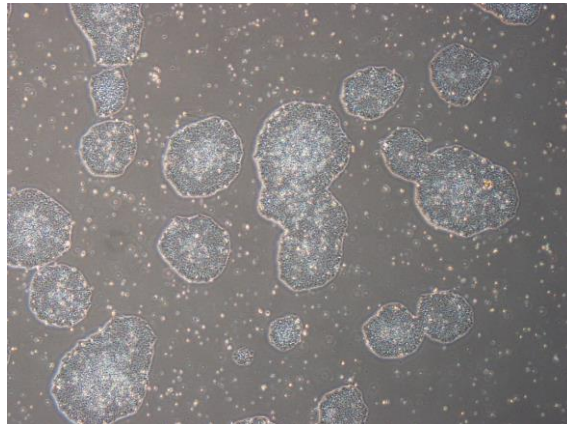
CiRA-j-1261-B: passage-3



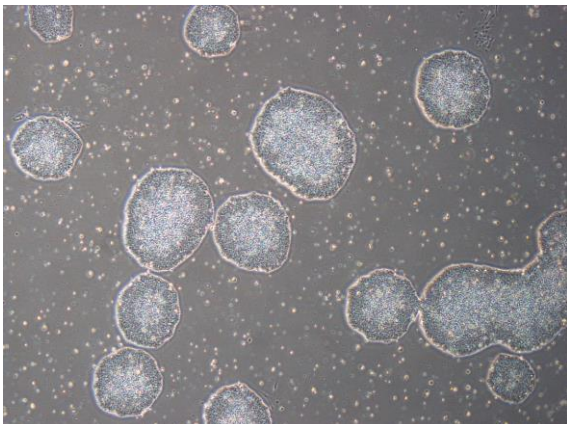
CiRA-j-1261-C: passage-3



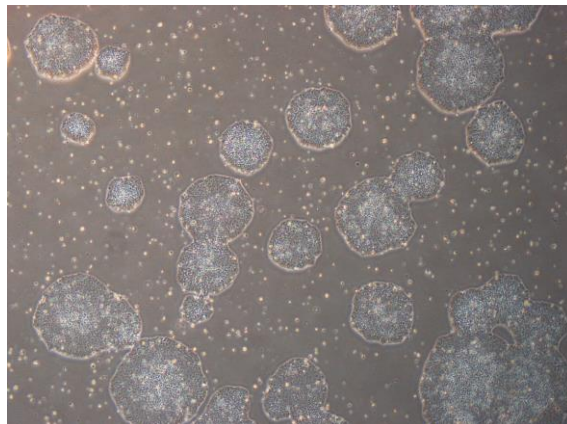
CiRA-j-1261-D: passage-3



CiRA-j-1261-E: passage-3



CiRA-j-1261-F: passage-3



(All images were captured at 4x magnification)